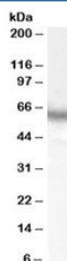


S6K Antibody [RPS6KB1] (R34750)

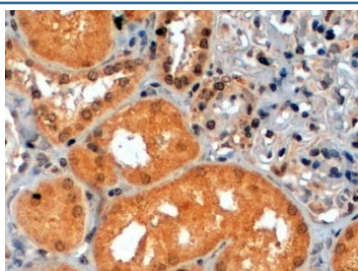
Catalog No.	Formulation	Size
R34750-100UG	0.5 mg/ml in 1X TBS, pH7.3, with 0.5% BSA (US sourced) and 0.02% sodium azide	100 ug

[Bulk quote request](#)

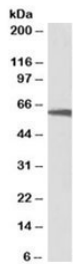
Availability	1-3 business days
Species Reactivity	Human, Mouse, Rat
Predicted Reactivity	Cow, Dog
Format	Antigen affinity purified
Clonality	Polyclonal (goat origin)
Isotype	Goat Ig
Purity	Antigen affinity
Gene ID	6198
Applications	Western Blot : 0.05-0.1ug/ml Immunohistochemistry (FFPE) : 2-4ug/ml ELISA (peptide) LOD : 1:8000
Limitations	This S6K antibody is available for research use only.



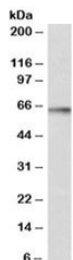
Western blot testing of human placenta lysate with S6K antibody at 0.05ug/ml. Predicted molecular weight: ~59kDa, routinely observed at 59-70kDa.



IHC staining of FFPE human kidney with S6K antibody at 2ug/ml. HIER: steamed with pH6 citrate buffer, HRP-staining.



Western blot of mouse NIH3T3 cell lysate with S6K antibody at 0.1ug/ml. Predicted molecular weight: ~59kDa, routinely observed at 59-70kDa.



Western blot of rat brain lysate with S6K antibody at 1ug/ml. Predicted molecular weight: ~59kDa, routinely observed at 59-70kDa.

Description

Additional name(s) for this target protein: Ribosomal protein S6 kinase, 70kD; p70 S6 kinase alpha; RPS6KB1

Application Notes

Optimal dilution of the S6K antibody should be determined by the researcher.

Immunogen

Amino acids MISKRPEHLRMNL were used as the immunogen for this S6K antibody.

Storage

Aliquot and store the S6K antibody at -20oC.